



Power Supply Procurement Plan [2025-2034]

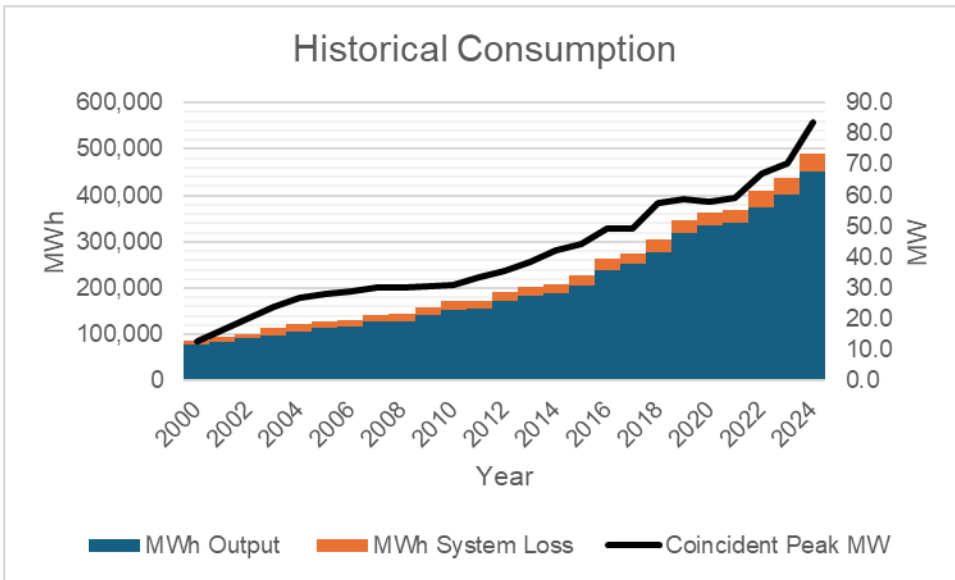
**ILOILO 1 ELECTRIC COOPERATIVE, INC
ILECO 1**

Historical Consumption Data

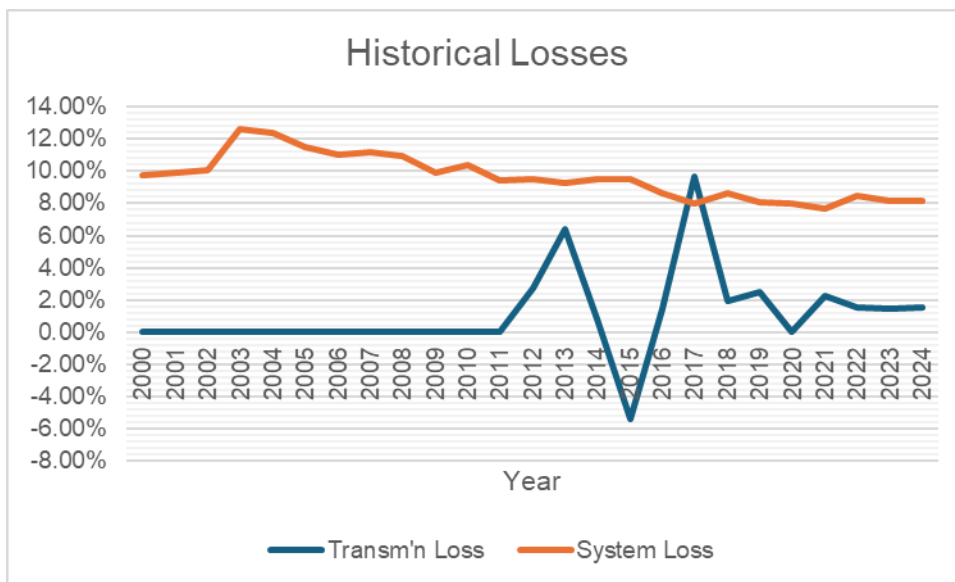
	Coincident Peak MW	MWh Offtake	WESM	MWh Input	MWh Output	MWh System Loss	Load Factor	Discrepancy	Transm'n Loss	System Loss
2000	13.00	86,962	0	86,962	78,491	8,471	76%	0.00%	0.00%	9.74%
2001	16.64	94,205	0	94,205	84,846	9,359	65%	0.00%	0.00%	9.93%
2002	20.28	101,448	0	101,448	91,201	10,248	57%	0.00%	0.00%	10.10%
2003	23.93	113,512	0	113,512	99,156	14,356	54%	0.00%	0.00%	12.65%
2004	27.03	122,057	0	122,057	106,963	15,094	52%	0.00%	0.00%	12.37%
2005	28.09	128,320	0	128,320	113,507	14,813	52%	0.00%	0.00%	11.54%
2006	29.16	131,589	0	131,589	117,078	14,510	52%	0.00%	0.00%	11.03%
2007	30.12	143,001	0	143,001	127,007	15,994	54%	0.00%	0.00%	11.18%
2008	30.34	144,120	0	144,120	128,290	15,830	54%	0.00%	0.00%	10.98%
2009	30.62	158,839	0	158,839	143,038	15,802	59%	0.00%	0.00%	9.95%
2010	30.90	171,300	0	171,300	153,517	17,783	63%	0.00%	0.00%	10.38%
2011	33.51	173,345	0	173,345	157,060	16,285	59%	0.00%	0.00%	9.39%
2012	35.44	195,664	-5,293	190,371	172,259	18,113	61%	0.00%	2.70%	9.51%
2013	38.31	216,084	-13,888	202,196	183,513	18,683	60%	0.00%	6.43%	9.24%
2014	42.15	211,271	-1,718	209,553	189,561	19,993	57%	0.00%	0.81%	9.54%
2015	44.29	216,396	11,697	228,094	206,319	21,775	59%	0.00%	-5.41%	9.55%
2016	49.25	266,423	38,244	262,540	239,926	22,614	61%	0.00%	1.46%	8.61%
2017	49.25	303,607	-24,888	274,253	252,252	22,000	64%	0.00%	9.67%	8.02%
2018	57.36	309,861	-21,136	303,761	277,610	26,151	60%	0.00%	1.97%	8.61%
2019	58.85	355,680	-33,932	346,823	318,768	28,055	67%	0.00%	2.49%	8.09%
2020	58.05	363,083	25,441	363,127	334,089	29,038	71%	0.00%	-0.01%	8.00%
2021	59.33	377,492	-1,412	369,075	340,822	28,253	71%	0.00%	2.23%	7.66%
2022	66.96	415,671	50,669	409,232	374,666	34,566	70%	0.00%	1.55%	8.45%
2023	70.53	444,915	122,701	438,495	402,855	35,640	71%	0.00%	1.44%	8.13%
2024	83.86	498,703	166,280	490,973	450,937	40,037	67%	0.00%	1.55%	8.15%

Peak Demand increased from 70.53 MW in 2023 to 83.86 MW in 2024 at a rate of 18.9% due to increase in demand of big loads consumers for the operation of the industrials and commercial load is slowly going back to normal situation. MWh Offtake increased from 444,915 MWh in 2023 to 498,703 MWh in 2024 at a rate of 12.09% due to same reason with the increase in demand. Within the same period, Load Factor ranged from

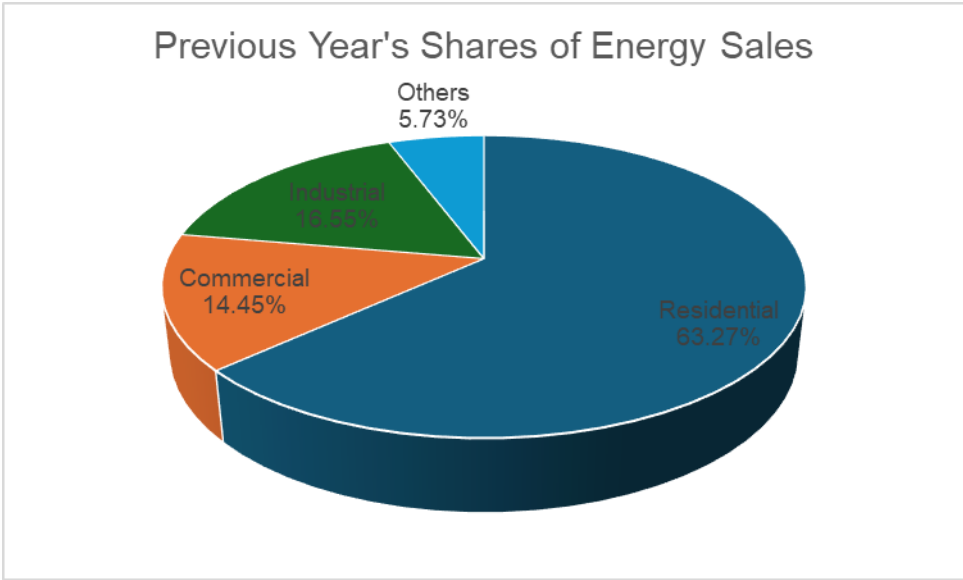
71% in 2023 and decreased to 67% in 2024. There was a slightly change in consumption by almost 11.94% from 2023 to 2024 due to the increase of number of consumers and additional big loads connection.



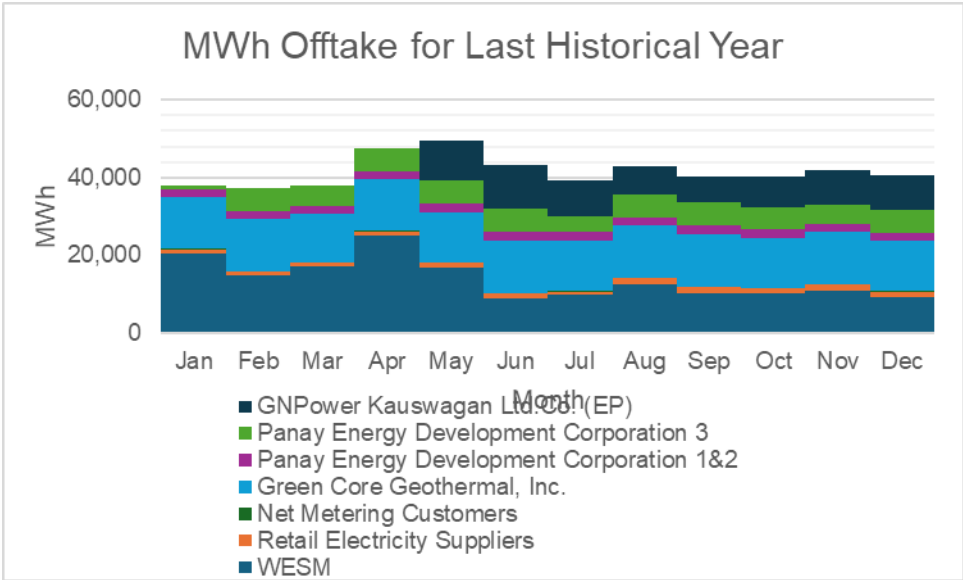
MWh Output increased from year 2023 to year 2024 at a rate of 11.94%, while MWh System Loss increased by 4,397 MWh at a rate of 12.34% within the same period. ILECO 1 system losses were maintained into a single digit for the past 5 years due to the continuous implementation of CAPEX projects particularly on the system loss reduction program.



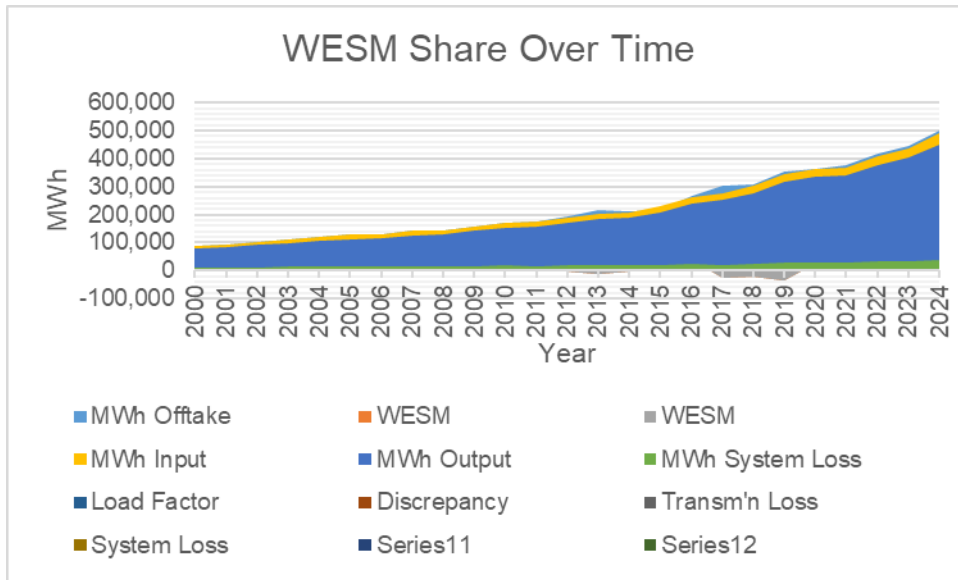
Historically, Transmission Loss ranged from -5.41 % to 9.67 % while System Loss ranged from 7.66 % to 12.65%. Transmission Loss peaked at 9.67% on year 2017. System Loss peaked at 12.65% on year 2003.



Residential customers account for the bulk of energy sales at 63.27% due to the high number of connections. In contrast, others customers accounted for Public Building and Street Light is only 5.73% of energy sales due to the low number of connections.

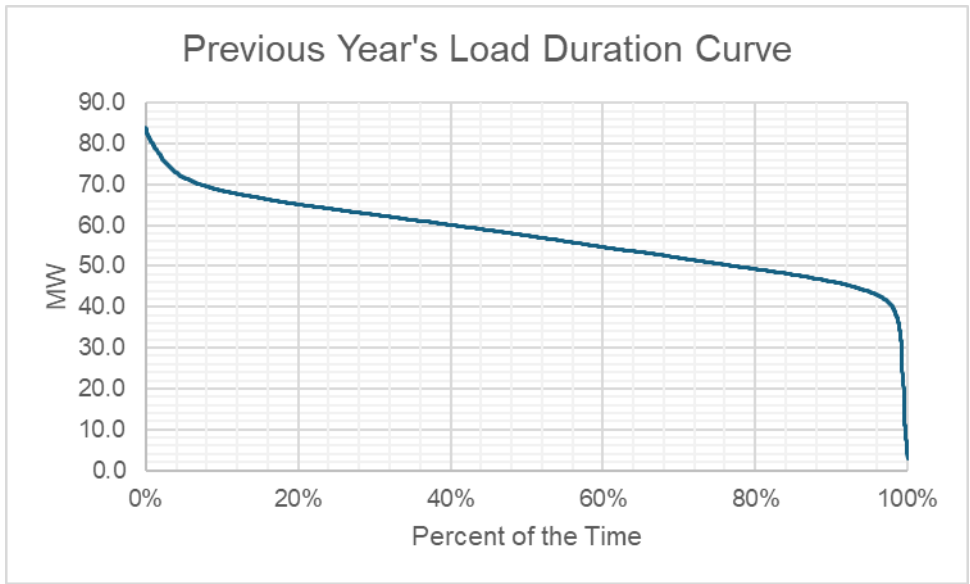


For 2024, the total Offtake for the last historical year is higher than the quantity stipulated in the PSA. The PSA with GCGI accounts for the bulk of MWh Offtake.

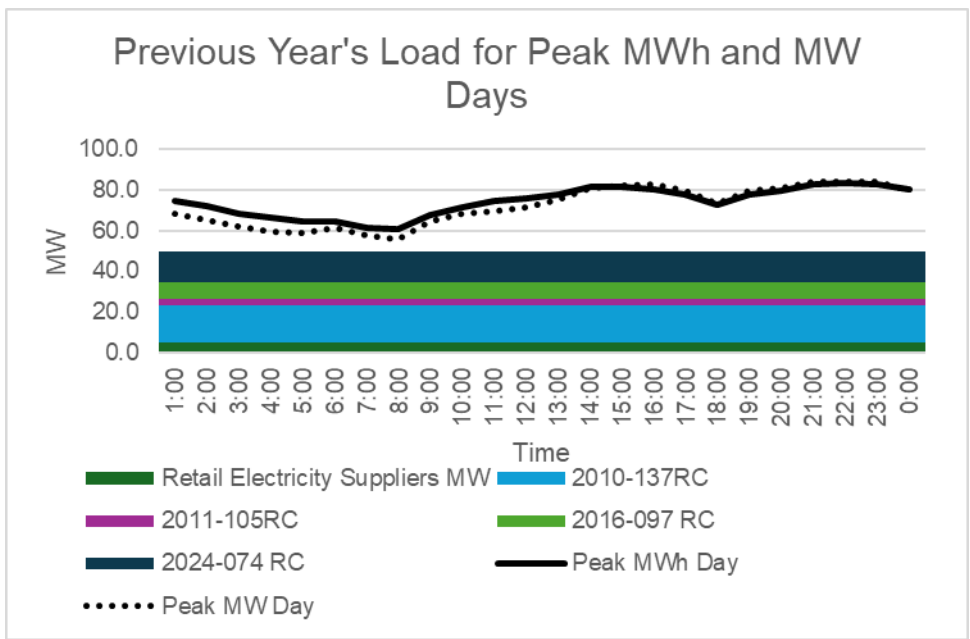


WESM Offtake increased from 122,701MWh in 2023 to 166,280MWh in 2024 at a rate of 35.52%. Increase of exposure to WESM was mainly due to the extreme heat last May caused by El Niño.

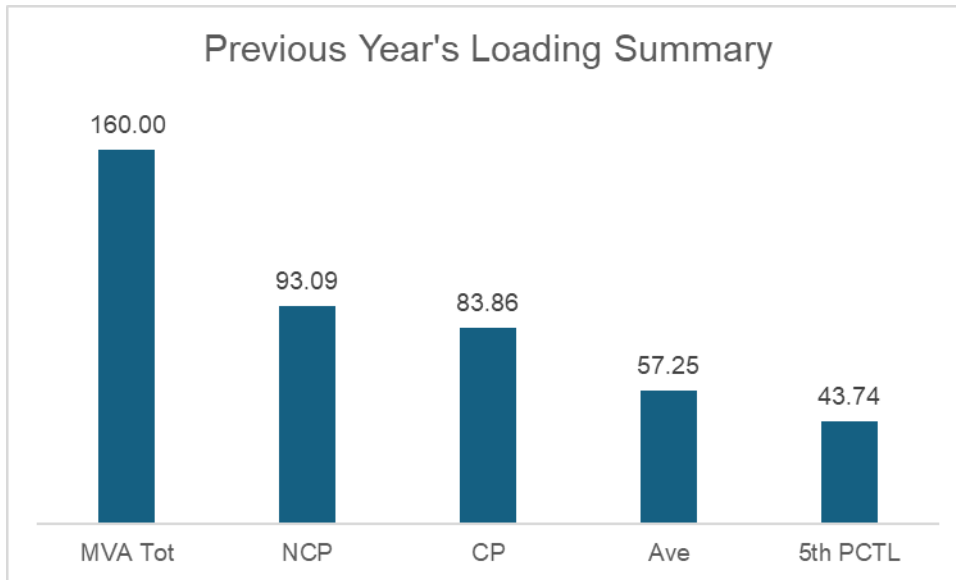
Previous Year's Load Profile



Based on the Load Duration Curve, the minimum load is 52.25 MW and the maximum load is 83.86 MW for the last historical year.



Peak MW occurred at around 7:00 PM to 9:00 PM due to 63.7% are residential consumers. Peak daily MWh occurred on the same time. As shown in the Load Curves, the available supply is lower than the Peak Demand. The maximum demand as of the year 2024 was 83.86 MW. ILECO 1 contracted capacity is only 44.50 MW which is not sufficient. The excess is sourced from the WESM.



The Non-coincident Peak Demand is 93.09 MW, which is around 58.18% of the total substation capacity of 160 MVA at a power factor of 96.29%. The load factor or the ratio between the Average Load of 57.25 MW and the Non-coincident Peak Demand is 61.50 % of. A safe estimate of the true minimum load is the fifth percentile load of 43.74 MW which is 46.99 % of the Non-coincident Peak Demand.

Metering Point	Substation MVA	Substation Peak MW
Sta Barbara	30	13.033
San Miguel	20	23.611
Tigbauan	10	9.497
Oton	15	10.122
Cabatuan	15	6.764
Miagao	10	5.611
Pavia	30	9.673
Guimbal	15	5.813
Leganes	10	6.307
San Joaquin	5	2.656

The substations loaded above 70% in 2024 are San Miguel and Tigbauan. Some of San Miguel's load has been transferred to Oton to lessen the load at San Miguel.

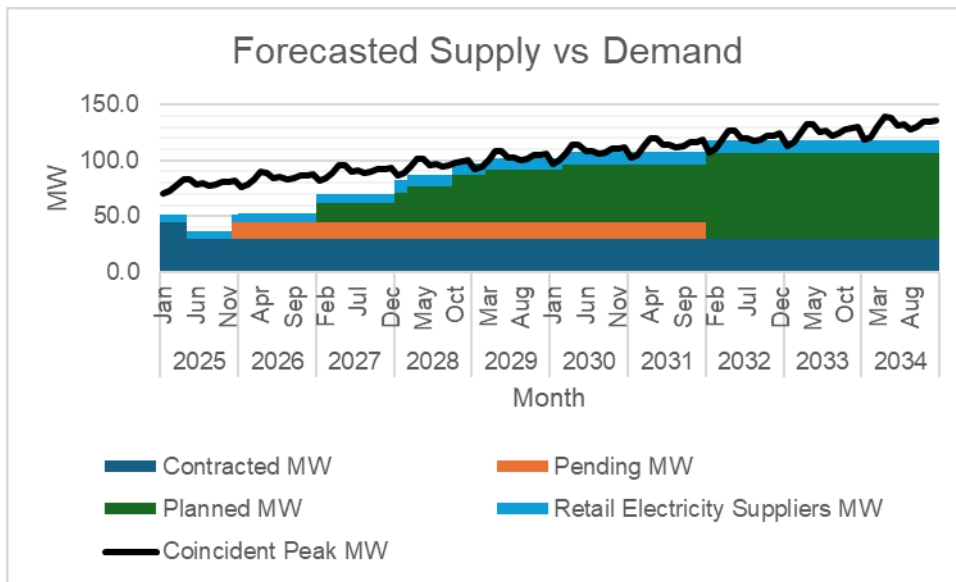
Forecasted Consumption Data

		Coincident Peak MW	Contracted MW	Pending MW	Planned MW	Retail Electricity Suppliers MW	Existing Contracting Level	Target Contracting Level	MW Surplus / Deficit
2025	Jan	71	44.50	0.00	0.00	6.53	69%	69%	-19.79
	Feb	73	44.50	0.00	0.00	6.53	67%	67%	-21.74
	Mar	78	44.50	0.00	0.00	6.53	63%	63%	-26.65
	Apr	83	44.50	0.00	0.00	6.53	58%	58%	-32.19
	May	83	29.50	0.00	0.00	6.53	39%	39%	-47.02
	Jun	79	29.50	0.00	0.00	6.53	41%	41%	-42.61
	Jul	79	29.50	0.00	0.00	6.53	41%	41%	-43.05
	Aug	77	29.50	0.00	0.00	6.53	42%	42%	-40.86
	Sep	78	29.50	0.00	0.00	6.53	41%	41%	-42.21
	Oct	80	29.50	0.00	0.00	6.53	40%	40%	-44.34
	Nov	81	29.50	0.00	0.00	6.53	40%	40%	-44.57
	Dec	82	29.50	15.00	0.00	6.53	39%	59%	-30.61
2026	Jan	76	29.50	15.00	0.00	7.83	43%	65%	-23.75
	Feb	78	29.50	15.00	0.00	7.83	42%	63%	-25.86
	Mar	83	29.50	15.00	0.00	7.83	39%	59%	-31.12
	Apr	89	29.50	15.00	0.00	7.83	36%	55%	-37.08
	May	89	29.50	15.00	0.00	7.83	36%	55%	-36.89
	Jun	84	29.50	15.00	0.00	7.83	38%	58%	-32.16
	Jul	85	29.50	15.00	0.00	7.83	38%	58%	-32.63
	Aug	83	29.50	15.00	0.00	7.83	39%	60%	-30.28
	Sep	84	29.50	15.00	0.00	7.83	39%	58%	-31.73
	Oct	86	29.50	15.00	0.00	7.83	38%	57%	-34.02
	Nov	87	29.50	15.00	0.00	7.83	37%	56%	-34.27
	Dec	88	29.50	15.00	0.00	7.83	37%	56%	-35.39
2027	Jan	81	29.50	15.00	17.00	8.83	41%	85%	-11.02
	Feb	84	29.50	15.00	17.00	8.83	39%	82%	-13.27
	Mar	89	29.50	15.00	17.00	8.83	37%	76%	-18.90
	Apr	96	29.50	15.00	17.00	8.83	34%	71%	-25.27
	May	95	29.50	15.00	17.00	8.83	34%	71%	-25.07
	Jun	90	29.50	15.00	17.00	8.83	36%	75%	-20.01
	Jul	91	29.50	15.00	17.00	8.83	36%	75%	-20.51
	Aug	88	29.50	15.00	17.00	8.83	37%	77%	-18.00
	Sep	90	29.50	15.00	17.00	8.83	36%	76%	-19.55
	Oct	92	29.50	15.00	17.00	8.83	35%	74%	-21.99
	Nov	93	29.50	15.00	17.00	8.83	35%	73%	-22.26
	Dec	94	29.50	15.00	17.00	8.83	35%	72%	-23.46
2028	Jan	87	29.50	15.00	27.00	11.03	39%	95%	-4.08
	Feb	89	29.50	15.00	27.00	11.03	38%	92%	-6.48
	Mar	95	29.50	15.00	32.00	11.03	35%	91%	-7.48
	Apr	102	29.50	15.00	32.00	11.03	33%	84%	-14.26
	May	102	29.50	15.00	32.00	11.03	33%	84%	-14.05
	Jun	96	29.50	15.00	32.00	11.03	35%	90%	-8.66

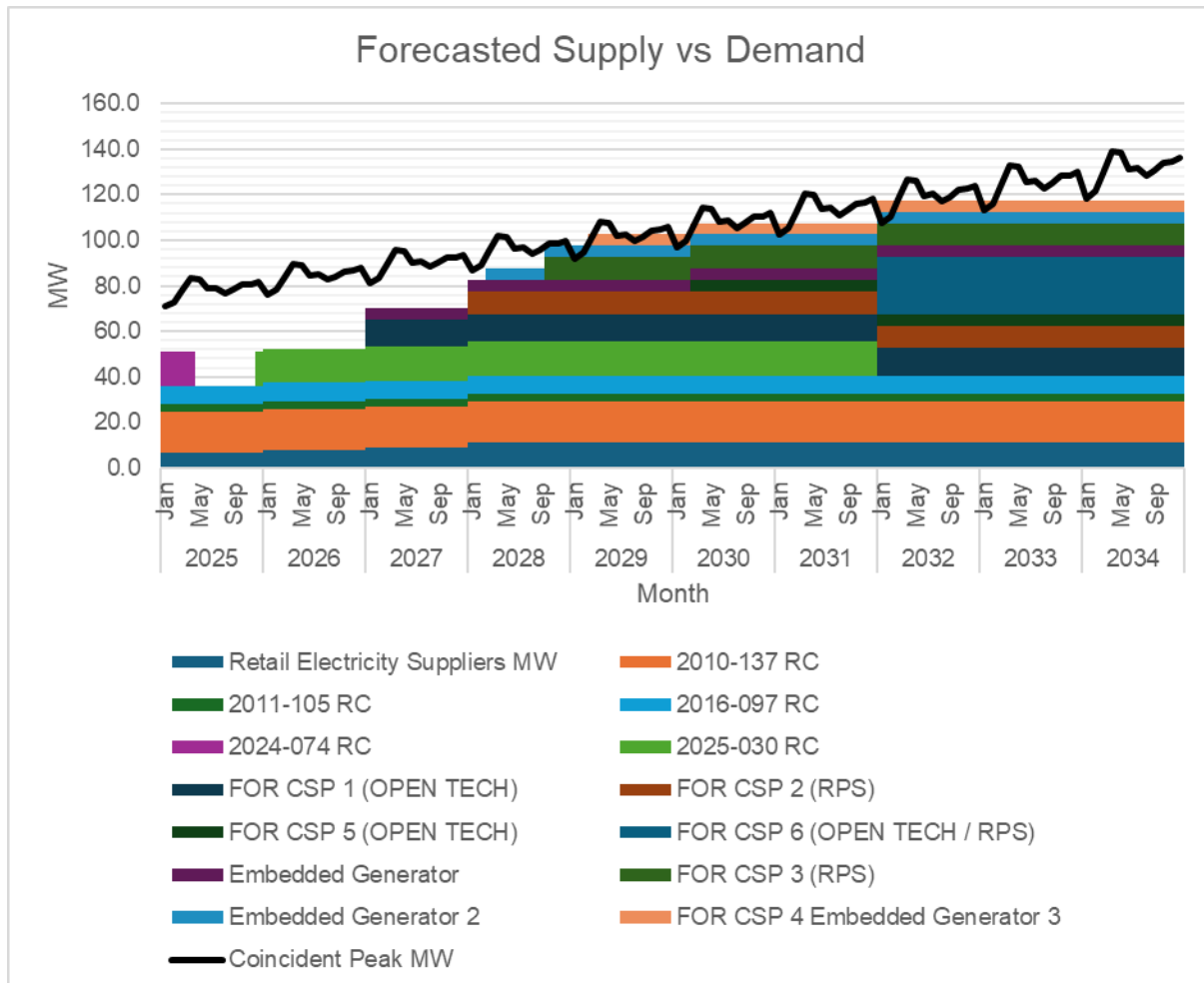
	Jul	97	29.50	15.00	32.00	11.03	34%	89%	-9.19
	Aug	94	29.50	15.00	32.00	11.03	36%	92%	-6.52
	Sep	96	29.50	15.00	32.00	11.03	35%	90%	-8.17
	Oct	98	29.50	15.00	42.00	11.03	34%	99%	-0.77
	Nov	99	29.50	15.00	42.00	11.03	34%	99%	-1.05
	Dec	100	29.50	15.00	42.00	11.03	33%	97%	-2.33
2029	Jan	92	29.50	15.00	42.00	11.03	36%	107%	5.65
	Feb	94	29.50	15.00	42.00	11.03	35%	104%	3.11
	Mar	101	29.50	15.00	47.00	11.03	33%	102%	1.75
	Apr	108	29.50	15.00	47.00	11.03	30%	94%	-5.45
	May	108	29.50	15.00	47.00	11.03	30%	95%	-5.22
	Jun	102	29.50	15.00	47.00	11.03	32%	101%	0.50
	Jul	103	29.50	15.00	47.00	11.03	32%	100%	-0.07
	Aug	100	29.50	15.00	47.00	11.03	33%	103%	2.76
	Sep	102	29.50	15.00	47.00	11.03	33%	101%	1.01
	Oct	104	29.50	15.00	47.00	11.03	32%	98%	-1.75
	Nov	105	29.50	15.00	47.00	11.03	32%	98%	-2.05
	Dec	106	29.50	15.00	47.00	11.03	31%	96%	-3.40
2030	Jan	97	29.50	15.00	47.00	11.03	34%	106%	5.38
	Feb	100	29.50	15.00	47.00	11.03	33%	103%	2.70
	Mar	107	29.50	15.00	52.00	11.03	31%	101%	0.97
	Apr	114	29.50	15.00	52.00	11.03	29%	94%	-6.64
	May	114	29.50	15.00	52.00	11.03	29%	94%	-6.40
	Jun	108	29.50	15.00	52.00	11.03	30%	100%	-0.35
	Jul	108	29.50	15.00	52.00	11.03	30%	99%	-0.95
	Aug	105	29.50	15.00	52.00	11.03	31%	102%	2.05
	Sep	107	29.50	15.00	52.00	11.03	31%	100%	0.19
	Oct	110	29.50	15.00	52.00	11.03	30%	97%	-2.72
	Nov	111	29.50	15.00	52.00	11.03	30%	97%	-3.04
	Dec	112	29.50	15.00	52.00	11.03	29%	96%	-4.47
2031	Jan	102	29.50	15.00	52.00	11.03	32%	106%	5.12
	Feb	105	29.50	15.00	52.00	11.03	31%	102%	2.29
	Mar	112	29.50	15.00	52.00	11.03	29%	95%	-4.80
	Apr	120	29.50	15.00	52.00	11.03	27%	88%	-12.82
	May	120	29.50	15.00	52.00	11.03	27%	88%	-12.57
	Jun	114	29.50	15.00	52.00	11.03	29%	94%	-6.20
	Jul	114	29.50	15.00	52.00	11.03	29%	93%	-6.83
	Aug	111	29.50	15.00	52.00	11.03	29%	96%	-3.67
	Sep	113	29.50	15.00	52.00	11.03	29%	94%	-5.62
	Oct	116	29.50	15.00	52.00	11.03	28%	92%	-8.70
	Nov	117	29.50	15.00	52.00	11.03	28%	91%	-9.04
	Dec	118	29.50	15.00	52.00	11.03	28%	90%	-10.54
2032	Jan	108	29.50	0.00	77.00	11.03	31%	110%	9.85
	Feb	111	29.50	0.00	77.00	11.03	30%	107%	6.87
	Mar	118	29.50	0.00	77.00	11.03	28%	99%	-0.58
	Apr	127	29.50	0.00	77.00	11.03	26%	92%	-9.01
	May	126	29.50	0.00	77.00	11.03	26%	92%	-8.75

	Jun	120	29.50	0.00	77.00	11.03	27%	98%	-2.05
	Jul	120	29.50	0.00	77.00	11.03	27%	98%	-2.71
	Aug	117	29.50	0.00	77.00	11.03	28%	101%	0.61
	Sep	119	29.50	0.00	77.00	11.03	27%	99%	-1.44
	Oct	122	29.50	0.00	77.00	11.03	27%	96%	-4.68
	Nov	123	29.50	0.00	77.00	11.03	26%	95%	-5.03
	Dec	124	29.50	0.00	77.00	11.03	26%	94%	-6.61
2033	Jan	113	29.50	0.00	77.00	11.03	29%	104%	4.59
	Feb	116	29.50	0.00	77.00	11.03	28%	101%	1.46
	Mar	124	29.50	0.00	77.00	11.03	26%	94%	-6.36
	Apr	133	29.50	0.00	77.00	11.03	24%	88%	-15.20
	May	132	29.50	0.00	77.00	11.03	24%	88%	-14.93
	Jun	125	29.50	0.00	77.00	11.03	26%	93%	-7.90
	Jul	126	29.50	0.00	77.00	11.03	26%	93%	-8.59
	Aug	123	29.50	0.00	77.00	11.03	26%	95%	-5.11
	Sep	125	29.50	0.00	77.00	11.03	26%	94%	-7.26
	Oct	128	29.50	0.00	77.00	11.03	25%	91%	-10.66
	Nov	129	29.50	0.00	77.00	11.03	25%	91%	-11.02
	Dec	130	29.50	0.00	77.00	11.03	25%	89%	-12.68
2034	Jan	118	29.50	0.00	77.00	11.03	28%	99%	-0.68
	Feb	121	29.50	0.00	77.00	11.03	27%	96%	-3.95
	Mar	130	29.50	0.00	77.00	11.03	25%	90%	-12.13
	Apr	139	29.50	0.00	77.00	11.03	23%	83%	-21.39
	May	139	29.50	0.00	77.00	11.03	23%	83%	-21.10
	Jun	131	29.50	0.00	77.00	11.03	25%	89%	-13.74
	Jul	132	29.50	0.00	77.00	11.03	24%	88%	-14.47
	Aug	128	29.50	0.00	77.00	11.03	25%	91%	-10.83
	Sep	131	29.50	0.00	77.00	11.03	25%	89%	-13.08
	Oct	134	29.50	0.00	77.00	11.03	24%	86%	-16.63
	Nov	135	29.50	0.00	77.00	11.03	24%	86%	-17.02
	Dec	136	29.50	0.00	77.00	11.03	24%	85%	-18.76

The Peak Demand was forecasted using the historical system peak and was assumed to occur on the month of April due to the weather is generally hot. Monthly Peak Demand is at its lowest on the month of January due to the coolest weather. The number of forecasted requirements from year 2025-2034 was based on the 7-year historical data. In forecasting, ILECO 1 used regression analysis and follows the criteria for the accuracy and validity test. In general, Peak Demand is expected to grow at an average rate of 5.90% annually.

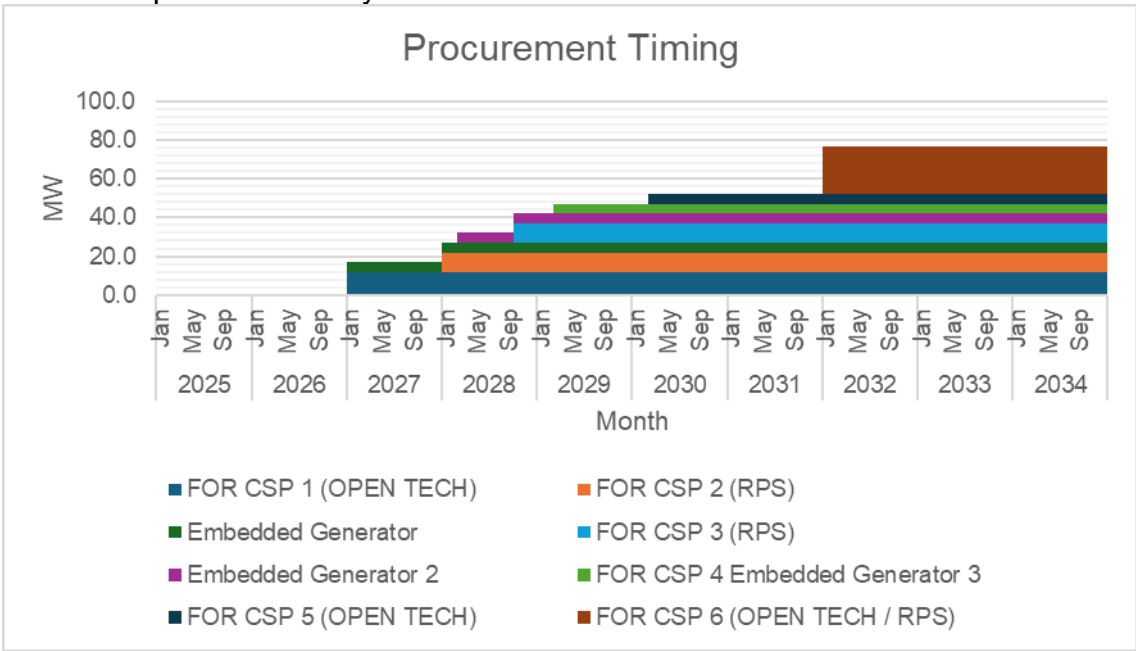


The available supply is generally below the Peak Demand. This is because of the rapid increase on the demand of ILECO 1.

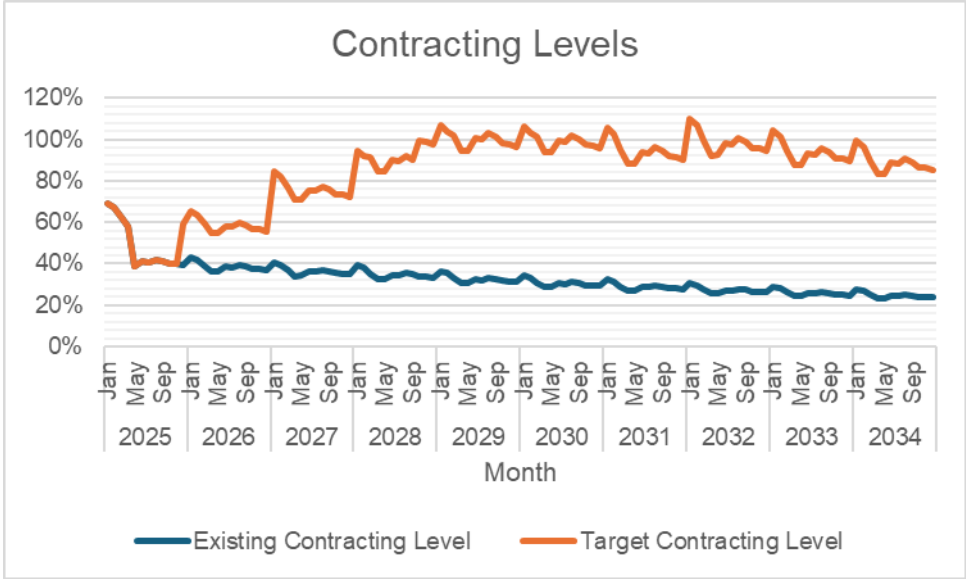


The available supply includes 18 MW from Green Core Geothermal, Inc. (GCGI), 8 MW from Panay Energy Development Corporation (PEDC) Unit 3, 3.5 MW from PEDC Units 1 & 2, and 15 MW from Sual Power Inc (SPI). The existing contracted capacity of ILECO 1 is 44.5 MW,

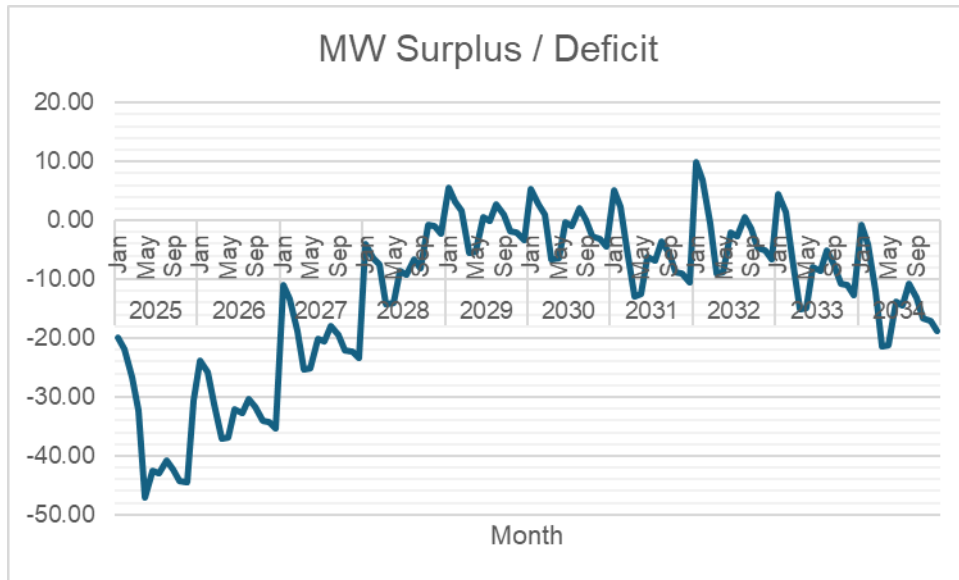
compared to a peak demand of 83.86 MW in 2024. Based on the forecasted demand, it is expected to reach up to 139 MW by 2034.



The first wave of supply procurement will consist of 12 MW baseload and a 5 MW Embedded Generator, which are expected to be available by December 2026, subject to the successful completion of the CSP and procurement process. Additional procurements are planned as follows: 10 MW RPS Intermediate, starting December 2027, 10 MW Intermediate, starting in September 2028; two 5 MW Embedded Generators, starting in February 2028 and February 2029, respectively; 5 MW baseload, starting in February 2030; and 25 MW baseload, starting in December 2031. The eight (8) power supply requirements shall be procured through the NEA Competitive Selection Process (CSP) for the 12 MW baseload, the ILECO I Bids and Awards Committee (BAC) for the three Embedded Generators, and the Aggregated BAC of the Panay–Guimaras Electric Cooperatives for the 10 MW RPS baseload. The remaining CSP requirements shall be procured through either of the three procurement bodies. These procurements will be conducted in accordance with the 2023 Department of Energy (DOE) CSP Policy, as amended and supplemented by the 2025 DOE Policy.



The highest target contracting level is 110% which is expected to occur in January 2032. The lowest target contracting level is 39%, which is expected to occur in May 2025.



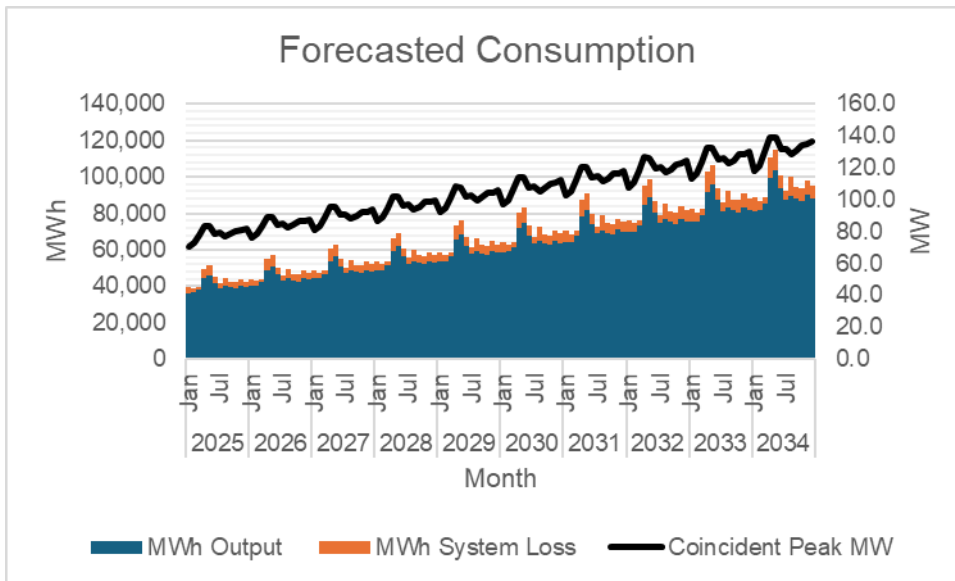
Currently, there is under-contracting by 44.5 MW. The highest deficit is 47.02 MW which is expected to occur on the month of May 2025. The highest surplus is 9.85 MW.

		MWh Offtake	MWh Output	MWh System Loss	Transm'n Loss	System Loss
2025	Jan	40,999	36,273	3,607	2.73%	9.05%
	Feb	40,085	36,509	2,409	2.91%	6.19%
	Mar	40,943	38,179	1,645	2.73%	4.13%
	Apr	50,884	44,298	5,342	2.44%	10.76%
	May	52,964	46,168	5,504	2.44%	10.65%
	Jun	46,648	41,975	3,325	2.89%	7.34%
	Jul	42,362	39,067	2,340	2.25%	5.65%
	Aug	46,370	40,036	4,793	3.32%	10.69%
	Sep	43,961	39,273	3,128	3.55%	7.38%
	Oct	43,689	38,697	3,442	3.55%	8.17%
	Nov	45,443	40,182	3,661	3.52%	8.35%
	Dec	44,317	39,482	3,191	3.71%	7.48%
2026	Jan	45,213	40,008	3,971	2.73%	9.03%
	Feb	44,208	40,269	2,652	2.91%	6.18%
	Mar	45,156	42,111	1,811	2.73%	4.12%
	Apr	56,113	48,860	5,881	2.44%	10.74%
	May	58,406	50,922	6,059	2.44%	10.63%
	Jun	51,445	46,298	3,661	2.89%	7.33%
	Jul	46,719	43,090	2,576	2.25%	5.64%
	Aug	51,135	44,158	5,276	3.32%	10.67%
	Sep	48,481	43,318	3,444	3.55%	7.36%
	Oct	48,181	42,682	3,789	3.55%	8.15%
	Nov	50,115	44,319	4,030	3.52%	8.33%
	Dec	48,874	43,548	3,513	3.71%	7.46%
2027	Jan	49,893	44,162	4,369	2.73%	9.00%
	Feb	48,789	44,450	2,918	2.91%	6.16%
	Mar	49,838	46,483	1,993	2.73%	4.11%

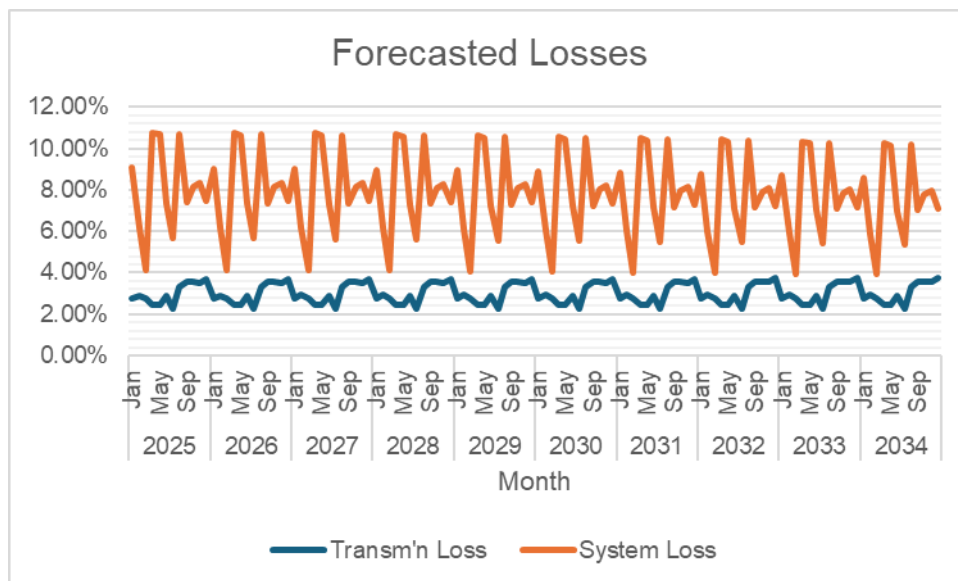
	Apr	61,918	53,933	6,471	2.45%	10.71%
	May	64,449	56,209	6,667	2.44%	10.60%
	Jun	56,774	51,105	4,028	2.89%	7.31%
	Jul	51,560	47,564	2,834	2.25%	5.62%
	Aug	56,426	48,743	5,806	3.32%	10.64%
	Sep	53,503	47,815	3,790	3.55%	7.34%
	Oct	53,170	47,113	4,170	3.55%	8.13%
	Nov	55,304	48,921	4,434	3.52%	8.31%
	Dec	53,936	48,070	3,866	3.71%	7.44%
2028	Jan	54,978	48,681	4,796	2.73%	8.97%
	Feb	53,767	48,998	3,203	2.91%	6.14%
	Mar	54,929	51,240	2,188	2.73%	4.09%
	Apr	68,224	59,452	7,103	2.45%	10.67%
	May	71,013	61,961	7,318	2.44%	10.56%
	Jun	62,564	56,335	4,421	2.89%	7.28%
	Jul	56,823	52,432	3,111	2.25%	5.60%
	Aug	62,172	53,731	6,373	3.33%	10.60%
	Sep	58,960	52,708	4,159	3.55%	7.31%
	Oct	58,591	51,935	4,577	3.55%	8.10%
	Nov	60,943	53,927	4,867	3.53%	8.28%
	Dec	59,437	52,989	4,243	3.71%	7.41%
2029	Jan	60,412	53,517.83	5,244	2.73%	8.92%
	Feb	59,090	53,866.53	3,502	2.91%	6.10%
	Mar	60,373	56,330.37	2,392	2.73%	4.07%
	Apr	74,960	65,358.72	7,766	2.45%	10.62%
	May	78,025	68,117.04	8,001	2.44%	10.51%
	Jun	68,754	61,931.65	4,834	2.89%	7.24%
	Jul	62,450	57,640.93	3,401	2.25%	5.57%
	Aug	68,311	59,069.58	6,968	3.33%	10.55%
	Sep	64,793	57,944.70	4,548	3.55%	7.28%
	Oct	64,385	57,094.47	5,004	3.55%	8.06%
	Nov	66,968	59,284.98	5,321	3.53%	8.24%
	Dec	65,317	58,253.21	4,639	3.71%	7.38%
2030	Jan	66,145	58,630	5,707	2.73%	8.87%
	Feb	64,710	59,012	3,811	2.92%	6.07%
	Mar	66,123	61,711	2,603	2.73%	4.05%
	Apr	82,065	71,602	8,452	2.45%	10.56%
	May	85,421	74,624	8,708	2.45%	10.45%
	Jun	75,287	67,848	5,261	2.89%	7.20%
	Jul	68,392	63,147	3,702	2.26%	5.54%
	Aug	74,787	64,712	7,584	3.33%	10.49%
	Sep	70,950	63,480	4,950	3.55%	7.23%
	Oct	70,500	62,548	5,446	3.55%	8.01%
	Nov	73,327	64,948	5,792	3.53%	8.19%
	Dec	71,523	63,818	5,049	3.71%	7.33%
2031	Jan	72,136	63,981.23	6,182	2.73%	8.81%
	Feb	70,585	64,398.10	4,128	2.92%	6.02%

	Mar	72,137	67,344	2,820	2.74%	4.02%
	Apr	89,486	78,137	9,155	2.45%	10.49%
	May	93,146	81,435	9,432	2.45%	10.38%
	Jun	82,115	74,040	5,699	2.89%	7.15%
	Jul	74,603	68,910	4,010	2.26%	5.50%
	Aug	81,551	70,618	8,214	3.33%	10.42%
	Sep	77,385	69,274	5,361	3.55%	7.18%
	Oct	76,890	68,257	5,899	3.56%	7.95%
	Nov	79,973	70,876	6,273	3.53%	8.13%
	Dec	78,010	69,642	5,469	3.72%	7.28%
2032	Jan	78,347	69,540	6,663	2.74%	8.74%
	Feb	76,679	69,993	4,449	2.92%	5.98%
	Mar	78,378	73,194	3,039	2.74%	3.99%
	Apr	97,177	84,925	9,867	2.45%	10.41%
	May	101,153	88,509	10,166	2.45%	10.30%
	Jun	89,198	80,472	6,142	2.90%	7.09%
	Jul	81,048	74,897	4,322	2.26%	5.46%
	Aug	88,561	76,753	8,854	3.34%	10.34%
	Sep	84,060	75,292	5,778	3.56%	7.13%
	Oct	83,516	74,187	6,358	3.56%	7.89%
	Nov	86,864	77,033	6,761	3.53%	8.07%
	Dec	84,738	75,693	5,895	3.72%	7.23%
2033	Jan	84,746	75,278	7,147	2.74%	8.67%
	Feb	82,963	75,768	4,773	2.92%	5.93%
	Mar	84,815	79,234	3,260	2.74%	3.95%
	Apr	105,099	91,933	10,585	2.46%	10.32%
	May	109,400	95,813	10,905	2.45%	10.22%
	Jun	96,497	87,112	6,589	2.90%	7.03%
	Jul	87,694	81,077	4,636	2.26%	5.41%
	Aug	95,782	83,087	9,497	3.34%	10.26%
	Sep	90,939	81,504	6,199	3.56%	7.07%
	Oct	90,345	80,308	6,820	3.56%	7.83%
	Nov	93,965	83,390	7,253	3.54%	8.00%
	Dec	91,672	81,938	6,323	3.72%	7.16%
2034	Jan	91,306	81,171	7,632	2.74%	8.59%
	Feb	89,408	81,700	5,096	2.92%	5.87%
	Mar	91,422	85,437	3,481	2.74%	3.91%
	Apr	113,217	99,131	11,303	2.46%	10.23%
	May	117,851	103,314	11,644	2.45%	10.13%
	Jun	103,984	93,933	7,036	2.90%	6.97%
	Jul	94,511	87,425	4,950	2.26%	5.36%
	Aug	103,181	89,592	10,141	3.34%	10.17%
	Sep	97,994	87,886	6,619	3.56%	7.00%
	Oct	97,347	86,596	7,283	3.56%	7.76%
	Nov	101,246	89,918	7,745	3.54%	7.93%
	Dec	98,783	88,354	6,752	3.72%	7.10%

MWh Offtake was forecasted using 7-year historical data in regression analysis. The assumed load factor is 94.7%. System Loss was calculated through a Load Flow Study conducted on year 2023 using Synergi software. Based on the same study, the Distribution System can adequately convey electricity to customers.



MWh Output was expected to grow at a rate of 9.37% annually.



Transmission Loss is expected to range from 2.25% to 3.72% while System Loss is expected to range from 3.91% to 10.76%.

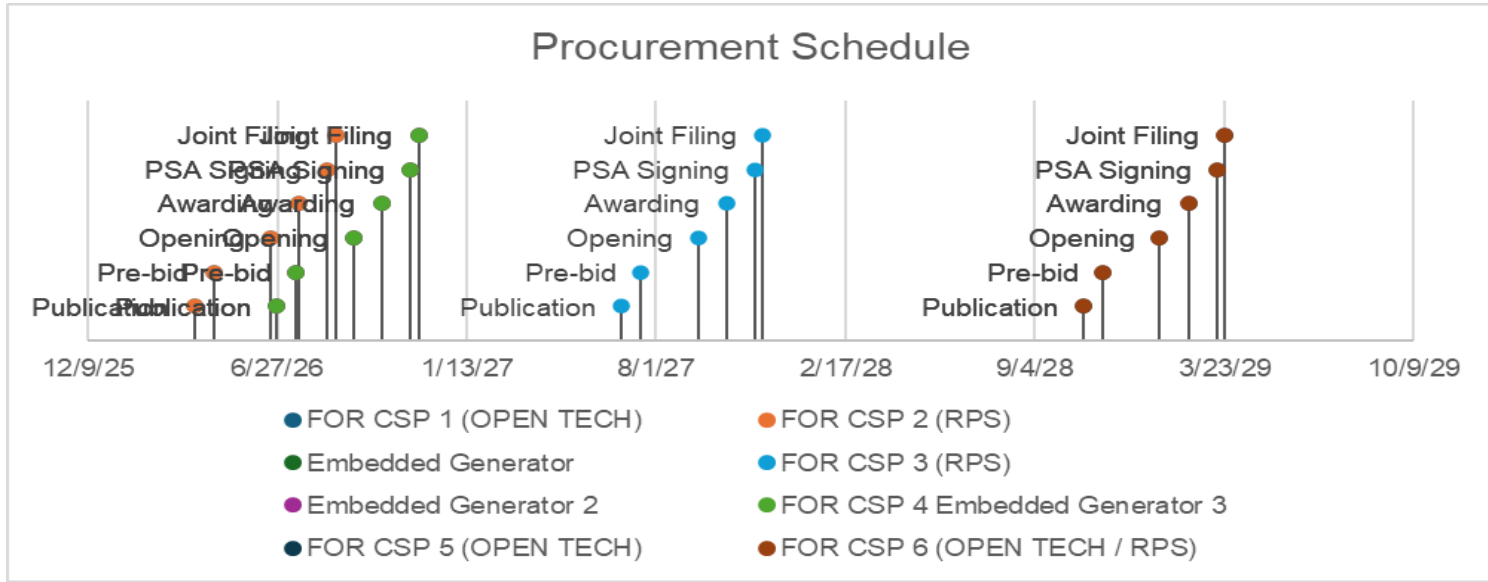
Power Supply

Case No.	Type	GenCo	Minimum MW	Minimum MWh/yr	PSA Start	PSA End
2010-137 RC	Base	Green Core Geothermal, Inc.	18.00	157,680	3/26/2015	12/25/2035
2011-105 RC	Base	Panay Energy Development Corporation	2.63	22,995	4/26/2011	4/25/2036
2016-097 RC	Base	Panay Energy Development Corporation	8.00	70,080	2/26/2017	2/25/2042
2024-074 RC	Base	GN Power Kauswagan Ltd.	15.00	131,400	4/26/2024	4/25/2025

The Power Supply Agreements (PSA) with Green Core Geothermal, Inc. (GCGI) with 18 MW contracted capacity at 100% Load Factor and Panay Energy Development Corporation (PEDC) Units 1 & 2 with 3.5 MW contracted capacity at 75% Load Factor and Panay Energy Development Corporation (PEDC) Unit 3 with 8 MW contracted capacity at 100% Load Factor, ILECO 1 is authorized by its power suppliers to nominate the minimum MW Capacity, under ERC Case Nos. 2010-137 RC, 2011-105 RC, and 2016-097, respectively. These contracts were procured through proposals, negotiations, and a Swiss challenge. All three suppliers are baseload plants, and their performance complies with the obligations outlined in their power supply contracts. As for the status of other plants in previous years, ILECO 1 and Panay Power Corporation mutually agreed to pre-terminate the Amended Electric Power Purchase Agreement (AEPPA) in a letter dated June 16, 2022, with the termination effective on June 25, 2022. The contract with PPC was ended by ILECO 1 to reduce the power rate. Following this, ILECO 1 entered into an Emergency Power Supply Agreement (EPSA) with Energy Development Corporation (EDC), effective from March 25, 2022, to March 25, 2023. Additionally, the contract with Palm Concepcion Power Corporation for a 6MW supply was terminated in August 2023 affected by the Supreme Court's decision in the Alyansa para sa Bagong Pilipinas, Inc. (Alyansa Ruling). Last 2024 ILECO 1 entered into an Emergency Power Supply Agreement (EPSA) with GN Power Kauswagan Ltd., effective from April 26, 2024, to April 2, 2025. Pending Power Supply Agreement (PSA) application with Sual Power Inc., with a capacity of 15 MW with a minimum CUF of 70%, subject to approval by the ERC, as detailed in the table below:

Case No.	Type	GenCo	Minimum MW	Minimum MWh/yr	PSA Start	PSA End
2025-030 RC	Base	San Miguel Energy Corporation	10.50	64,386	11/26/2025	12/25/2031

	FOR CSP 1 (OPEN TECH)	FOR CSP 2 (RPS)	Embedded Generator	FOR CSP 3 (RPS)	Embedded Generator 2	FOR CSP 4 Embedded Generator 3	FOR CSP 5 (OPEN TECH)	FOR CSP 6 (OPEN TECH / RPS)
Type	Base	Intermediate	Intermediate	Intermediate	Intermediate	Intermediate	Base	Base
Minimum MW	7.80	10	5	10	5	5	3.25	16.25
Minimum MWh/yr	68,328	16,425	8,213	16,425	8,213	8,213	28,470	142,350
PSA Start	12/26/2026	12/26/2027	12/26/2026	9/26/2028	2/26/2028	2/26/2029	2/26/2030	12/26/2031
PSA End	12/25/2041	12/25/2047	12/25/2046	9/25/2048	2/25/2048	2/25/2049	2/25/2045	12/25/2051
Publication	3/31/2026	3/31/2026	6/26/2026	6/25/2027	6/26/2026	6/26/2026	10/25/2028	10/25/2028
Pre-bid	4/21/2026	4/21/2026	7/17/2026	7/16/2027	7/17/2026	7/17/2026	11/15/2028	11/15/2028
Opening	6/20/2026	6/20/2026	9/15/2026	9/14/2027	9/15/2026	9/15/2026	1/14/2029	1/14/2029
Awarding	7/20/2026	7/20/2026	10/15/2026	10/14/2027	10/15/2026	10/15/2026	2/13/2029	2/13/2029
PSA Signing	8/19/2026	8/19/2026	11/14/2026	11/13/2027	11/14/2026	11/14/2026	3/15/2029	3/15/2029
Joint Filing	8/28/2026	8/28/2026	11/23/2026	11/22/2027	11/23/2026	11/23/2026	3/24/2029	3/24/2029



For CSP 1 (Open Tech – 12 MW Base) with a minimum Capacity Utilization Factor (CUF) of 65%, which will be available by December 2026, with CSP publication scheduled for March 2026.

For CSP 2 (RPS – 10 MW Intermediate), which will be available by December 2027, the CSP publication is scheduled for March 2026.

For Embedded Generators (3 x 5 MW), planned in three service areas, will be available by December 2026, February 2028, and February 2029, with CSP publications scheduled for June 2026 for all units.

For CSP 3 (RPS – 10 MW Intermediate), which will be available by March 2028, the CSP publication is scheduled for June 2027.

For CSP 5 (Open Tech – 5 MW Base) with a minimum Capacity Utilization Factor (CUF) of 65%, which will be available by February 2030, the CSP publication is scheduled for October 2028.

For, CSP 6 (Open Tech / RPS – 25 MW Base) with a minimum Capacity Utilization Factor (CUF) of 65%, which will be available by December 2031, will also have its CSP publication in October 2028.

Captive Customer Connections

The residential connections and energy sales contribute the highest percentage among all the customer class followed by the commercial and industrial. The number of Residential connections is expected to grow at an average rate of 2.12% annually.

